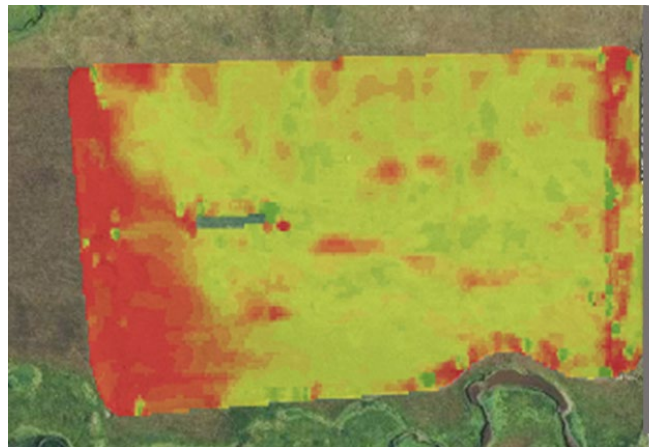


# How can you increase farm sustainability and create habitat for pollinators and wildlife?

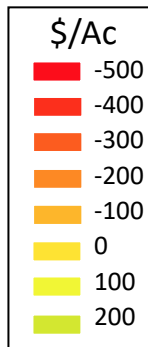
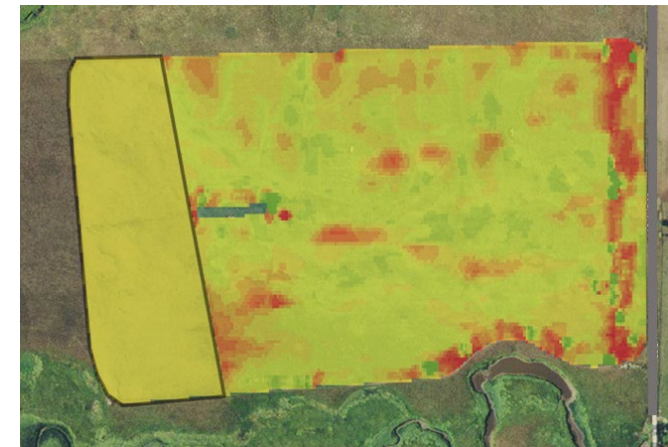
Aerial Image



Profitability Map



Unprofitable Acres into Habitat



### Corn Production

Average Yield	155.2 bu/acre
Profit	(\$50.05)/ acre
Return On Investment	-8.4%

### Alternative Management – Corn & Habitat

Average Yield	177.7 bu/ acre
Profit	\$13.74/ acre
Return On Investment	2.8%

By removing the most unprofitable acres and adding habitat you can increase profits through reduced inputs and program opportunity income, such as through the Conservation Reserve Program.

